

CERTIFICATE OF LOCATION OF GOVERNMENT CORNER

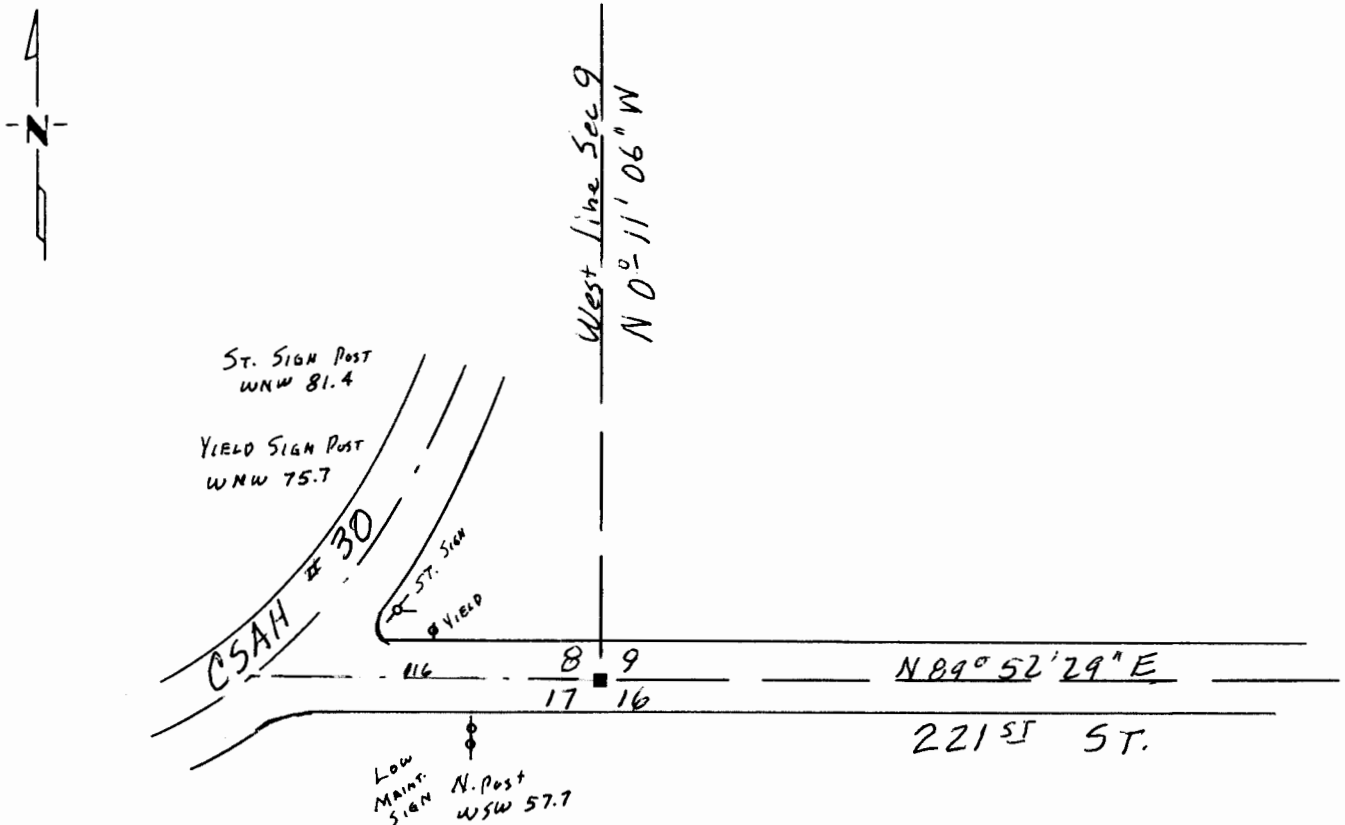
SOUTH WEST Corner of Section 9, Township 108, Range 41, 5 P.M.

STATE OF MINNESOTA, County of MURRAY

At the corner location shown on the sketch:

- On 7-18-2002 found a STONE 4 FT down on E Gravel Rd. near level of old
DATE
late reads as indicated by old records
 - left monument as found, lowered monument, removed monument (explain)
- On 7-18-2002 placed a Iron T-Bar over Stone to near road surface.
DATE

SKETCH OF REFERENCE TIES



Statement of evidence relative to this corner location is on back of page.

I hereby certify that this document and the data contained herein was prepared by me or under my direct supervision.

[Signature] 7-16-2003
SIGNATURE DATE

Registration No. 12237

- Land Surveyor, Professional Engineer
- County Surveyor, County Engineer

OFFICE OF THE REGISTER OF DEEDS
County of _____

I hereby certify that this document was filed in the Reg. of Deeds office at _____ .M. on the _____ day of MAY 17 2004 A.D., 19 _____

Register of Deeds [Signature]
By _____, Deputy

DOCUMENT NO. _____

Statement of Evidence:

Original Survey did not set this corner but did position its location by offset.

May 1931 Survey by FA March established this corner on line of NW Cor and W¹/₄ Cor at 2640 feet from W¹/₄ Cor. He placed a 12x12x20 stone for the corner. Lake apparently had receded. Appears to have been used again in 1934 with ties taken. Ties Gone.

On 7-18-2002 we dug for SW Cor Sec 9. at E of gravel Rd.

Dug thru 9"-10" of Rocks & gravel then thru black dirt for 3+ feet. Fd. a large stone at 4 feet down at a point level with crushed weeds. Top of stone just above weed level, bottom unknown as water was seeping into hole. Accepted as corner stone, tied out and set an Iron T Bar over stone at ties.